

**UNITED STATES PUBLIC LAND SURVEY CORNER CERTIFICATE FOR**

Land survey monuments situated in Section 32, Township 107 North, Range 39 West, of the Fifth Principal Meridian, Murray County, Minnesota..

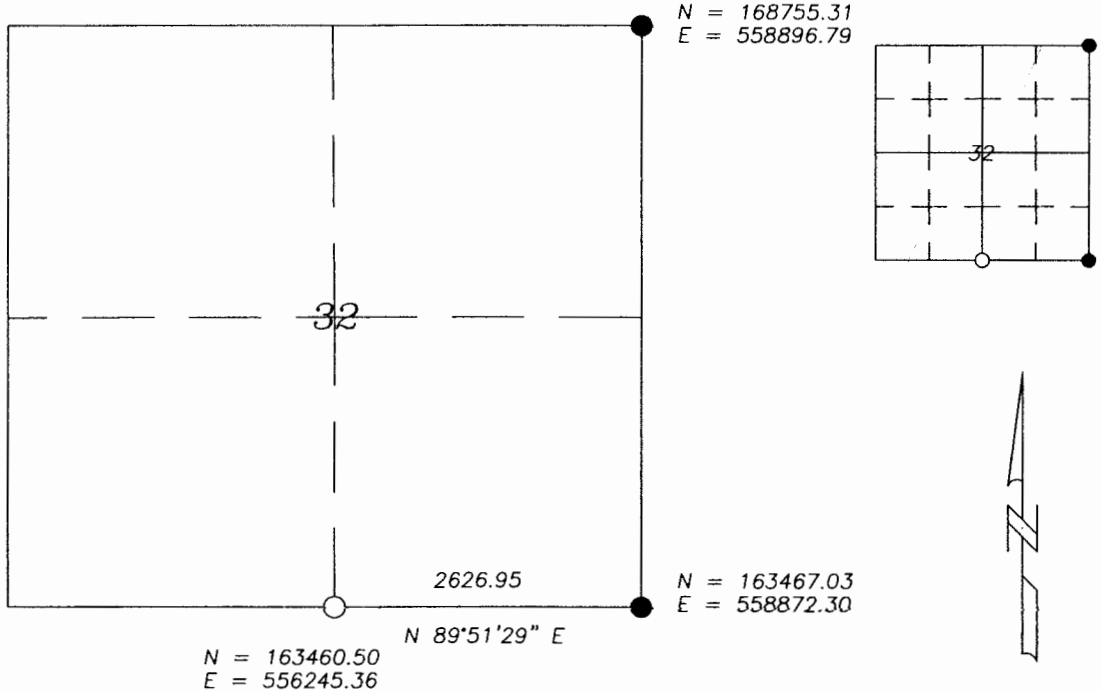
Previously recorded in N/A in County Recorder's Office.

(Show reason for preparing this certificate, the evidence and detailed procedure used in establishing the corner position & monumentation found or placed.)  
 MONUMENT DESCRIPTION AND REMARKS: On August 16, 2007 we dug with backhoe for S1/4 corner of

Section 32 and found a 11" X 15" stone 2.7 feet below road surface 3 feet north of Township Road  
Centerline and 6 feet west of fence line to north. Murray County Highway records indicate a 12" X 12"  
stone placed in 1895 after finding post and pits in small slough. I accepted the found stone as corner.

**PLAN-VIEW**

MURRAY COUNTY COORDINATES



I hereby certify that this land surveying document was prepared and related survey work was performed by me or under my direct supervision and that I am a duly licensed Land Surveyor under the laws of the State of Minnesota.

Perry L. Zieske 9-5-07  
 Signature Date  
 Perry Zieske  
 License number 23008

Corners to be Indexed

Corners	Section	Township	Range
S 1/4	32	107	39

SEP 10 2007

James V. Johnson